

Rab11

Catalog Number: 21157

Gene Symbol: RAB11

Description: Anti-Rab11 Rabbit Polyclonal Antibody

Background: Small GTPases of the Rab-family are crucial elements of the machinery that controls membrane traffic. Rab11 has been shown to control traffic through the recycling endosome.

Immunogen: A synthetic peptide near the N-terminus of human Rab11.

Tested applications: ELISA, WB, IHC, IP

Recommended dilutions:

ELISA: 1:1000-1:5000

WB: 1:100-1:1000

IHC: 1:100-1:1000

Concentration: 0.15 mg/ml

Host: Rabbit

Clonality: Polyclonal

Purity: Purified from serum

Format: Liquid

Storage buffer:

Preservative: no

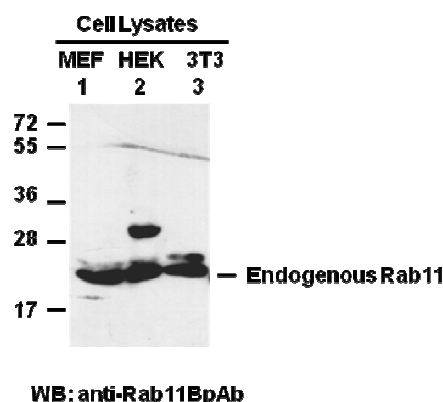
Constituents: PBS (without Mg^{2+} and Ca^{2+}), pH

7.4, 150 mM NaCl, 50% glycerol

Species Reactivity: Anti-Rab11 antibody recognizes Rab11 of vertebrates.

Storage Conditions: Store at -20°C. Avoid freeze / thaw cycles

Western blot:



Western blot analysis of Rab11 proteins. Whole-cell lysates of MEF (lane 1), HEK293T (lane 2) and 3T3 (lane 3) cells were used for western blots with the anti-Rab11 rabbit polyclonal antibody (Cat. # 21157).

For research use only. Not for diagnostic or therapeutic applications.