

Ras(G12D)

Catalog Number: 26036

Gene Symbol: RAS (G12D)

Description: Anti-Ras(G12D) Mouse Monoclonal Antibody

Background: K-Ras (G12D) is one type of K-Ras missense mutations at codon 12, changed from GGU to GAU. K-Ras protein is a membrane-associated GTPase signaling protein that regulates proliferation, differentiation, and cell survival. K-Ras G12D mutation result in decreased GTPase activity and constitutive signaling, and is correlated with the development of pancreatic intraepithelial neoplasia and lung lesions.

Immunogen: Recombinant full length protein of K-Ras (G12D).

Tested applications: ELISA, WB, IHC

Recommended dilutions:

ELISA 1:100-1:5000

WB 1:100-1:1000

IHC 1:50-1:100

Concentration: 1 mg/ml

Host: mouse

Clonality: Monoclonal

Isotype: IgG1, IgG2a, IgG2b

Purity: Purified from ascites

Format: Liquid

Storage buffer:

Preservative: no

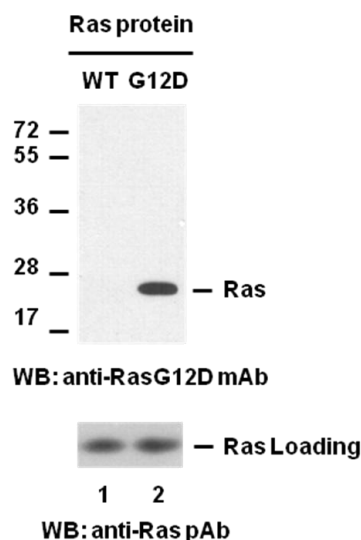
Constituents: PBS (without Mg^{2+} and Ca^{2+}), pH

7.4, 150 mM NaCl, 50% glycerol

Species Reactivity: Ras(G12D) antibody recognizes Ras(G12D) proteins of vertebrates.

Storage Conditions: Store at -20 °C. Avoid freeze / thaw cycles

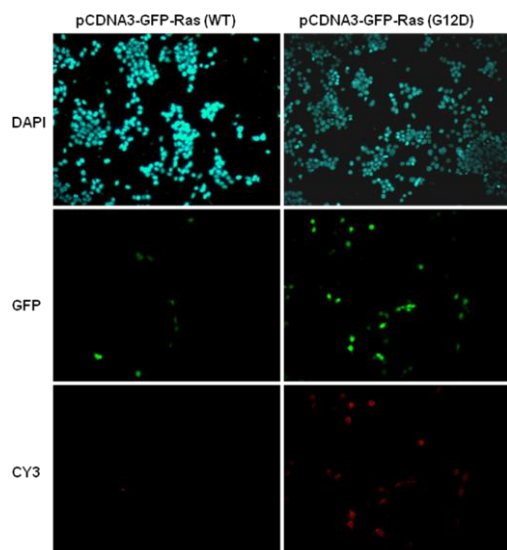
Western blot:



Western blot analysis of recombinant Ras WT and G12D proteins. Equal amount of purified Ras WT (lane 1, cat. #10172) and G12D (lane 2, cat.# 10154) proteins were loaded and blotted with anti-Ras G12D mouse monoclonal antibody(Cat. # 26036) (top panel). Input control (bottom panel) was blotted with rabbit polyclonal anti-Ras antibody (Cat. # 21021).

For research use only. Not for diagnostic or therapeutic applications.

Immunofluorescence:



Immunofluorescence of cell expressing Ras(G12D) protein with anti-Ras(G12D) antibody. HEK293T cells were transfected with pCDNA3-GFP-Ras(WT) plasmid (left column) or pCDNA3-GFP-Ras(G12D) plasmid (right column), then fixed and stained with anti-Ras(G12D) monoclonal antibody (Cat. # 26036).

For research use only. Not for diagnostic or therapeutic applications.